

BHX. GUN QUARTER

CLIVELAND ST.
B19. GUNQUARTER.
/012. 2020.

CLIVELAND ST.

B19. 2020.

CLIVELAND ST.

B19, GUNQUARTER.

1919, 2020.



THE DOORS WILL BE
OPENED TO THOSE WHO
ARE BRAVE ENOUGH
TO KNOCK.



OUT OF
THE PAST
FLOWS THE
FUTURE

CLIVELAND ST.
B19. GUNQUARTER.
1919. 2020.

ICON & INDIVIDUAL

FORGED FROM THE INDUSTRIAL
HEARTLANDS OF BRUM'S GUN
MAKING DISTRICT, CLIVELAND ST.
WILL BE HOME TO 52 CRAFTED
LIVING QUARTERS & A PENTHOUSE
SHOT TOWER EACH ECHOING
THE DISTINCTIVE CHARACTER
OF THE LOCATIONS UNIQUE
HERITAGE.

ROOTED DEEP WITHIN BRUM'S
CANAL-WOVEN LANDSCAPE,
THIS HISTORIC WATERSIDE
NEIGHBOURHOOD IS BEING
REVOLUTIONISED AS A CULTURAL
& CREATIVE HUB WHERE THE
INDEPENDENT SPIRIT LIVES ON
& THE KNOWLEDGE OF THE
PAST IS BEING USED TO
BUILD THE FUTURE.



ELEVATE PROPERTY GROUP

FIRST

COME

FIRST








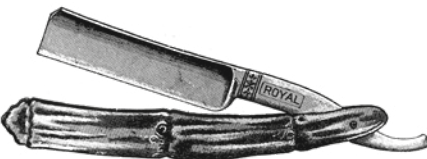


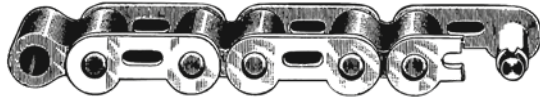
SERVE

CLIVELAND ST.
B19. GUNQUARTER.
1919. 2020.

TAKING STOCK

H I S T O R Y

M A K I N G

BRUM  WAS  THE
PINNACLE OF BRITISH
GUN  MAKING  FOR
OVER  A  CENTURY
&  THE  ROOTS
OF CST. ARE  WRITTEN
DEEP  INTO  ITS
INDUSTRIAL FOLKLORE

CLIVELAND ST.

B19, GUNQUARTER.

1919, 2020.

MASTERS & MAKERS



CLIVELAND ST.
B19, CUNQUARTER,
1919, 2020.

CENTURIES IN THE MAKING

THE INDUSTRIAL REVOLUTION
SHAPED BIRMINGHAM &
ITS LEGACIES ARE BEING
RETOLD & REMADE.

BARKER BRIDGE



WHITES IRONMONGERY



THE BULL PUB



BIRMINGHAM SMALL ARMS (BSA)



CLIVELAND ST. IS RICH IN HISTORY
- THIS IS A PLACE WHERE PEOPLE
MAKE THINGS HAPPEN.

IT'S A STORY OF ADAPTABILITY &
CREATIVITY. A STORY OF A HIGHLY
SKILLED WORKFORCE & SPECIALIST
TRADES IN A ENTREPRENEURIAL
ECONOMY OF INDEPENDENT WORKSHOPS.

BY THE NINETEENTH CENTURY,
AIDED BY A NETWORK OF CANALS,
THE QUARTER HAD BECOME THE
PREMINENT MAKER OF GUNS IN THE UK
- CLIVELAND ST. WAS ITS EPICENTRE.

THROUGH THE FABRIC OF THE
LOCAL ARCHITECTURE TO
THE TWIST & TURNS OF THE TOW PATHS
THIS PROUD HERITAGE
LIVES ON TO THIS DAY.





CLIVELAND ST.
B19, GUNQUARTER.
1919, 2020.

ORIGINAL EXPRESSWAY

CLIVELAND ST.
B19, GUNQUARTER.
1919, 2020.

FAC CS.01

BY ELEVATE





THE ORIGINS

THE DETAILS



THE SCALE



RIGGED & READY

PART OLD, PART NEW - INFLUENCED BY ITS INDUSTRIAL HERITAGE CLIVELAND ST. WILL COMBINE CRAFTSMANSHIP WITH A FORWARD-THINKING DESIGN APPROACH REFLECTIVE OF ITS FACTORY AESTHETIC.



CLIVELAND ST.
B19, GUNQUARTER,
1919, 2020.

FAC CS.01
BY ELEVATE

CLIVELAND ST.
B19. GUNQUARTER.
1919. 2020.

HIGH CALIBRE

IF

NOT


THIS


THEN

WHAT?

CLIVELAND ST.
B19, GUNQUARTER.
1919, 2020.

ISN'T INTRUSIVE OR

INVASIVE — IT  FITS

IN,  JOINS  IN  &

CONTRIBUTES  TO

THE  LANDSCAPE

&  WILL  BECOME

PART OF THE FABRIC

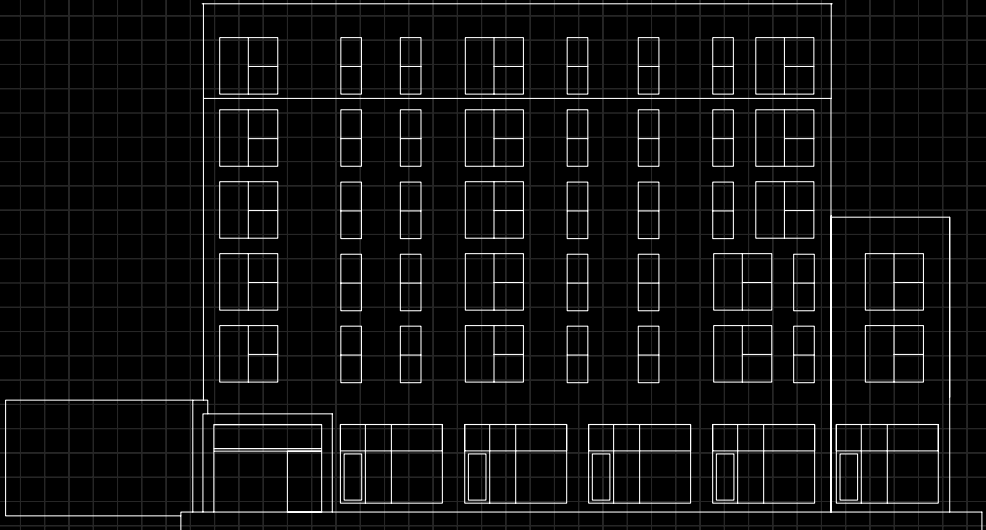
OF  LOCAL  LIFE

LOCKED & LOADED

MANY INFLUENCES MEET HERE,
BUT CLIVELAND ST. IS A PLACE
THAT WILL KEEP ITS SENSE
OF IDENTITY.

A PORTFOLIO OF 52 PRIVATE
APARTMENTS & A DETACHED
SHOT TOWER PENTHOUSE, ARE
CONFIDENTLY CRAFTED TO A
CALIBRE BEFITTING AN
ELEVATE PRODUCT.

CONCEIVED BY RICKETT ARCHITECTS,
THE DESIGN SCHEME COMBINES
THE SPIRIT OF THE PAST WITH A
MODERNIST FORM, ENSURING THE
BUILDING RESPONDS HARMONIOUSLY
TO ITS ENVIRONMENT. NOTABLE FOR
THE AREA, AN IMPRESSIVE 5 STOREY
EDIFICE SETS THE TONE FOR
WHAT'S TO FOLLOW INSIDE.



FRONT
CLIVELAND

ELEVATION
ST

CLIVELAND ST.
B19, GUNQUARTER,
1919, 2020.

MADE OF HISTORY





CLIVELAND ST.

B19, GUNQUARTER,

1919, 2020.

MASTERPLAN

CLIVELAND ST. STANDS APART,
IT TRANSFORMS WITH TIME
AND THE SEASONS.

CONCEIVED FOR MODERN LIVING,
THIS IS A PLACE WHERE YOU
CHOOSE TO CONNECT
OR DISCONNECT.

ITS UNIQUE ARCHITECTURAL
COMPOSITION FRAMES & CAPTURES
VIEWS ACROSS THE WATERWAYS,
THE CITY & BEYOND.

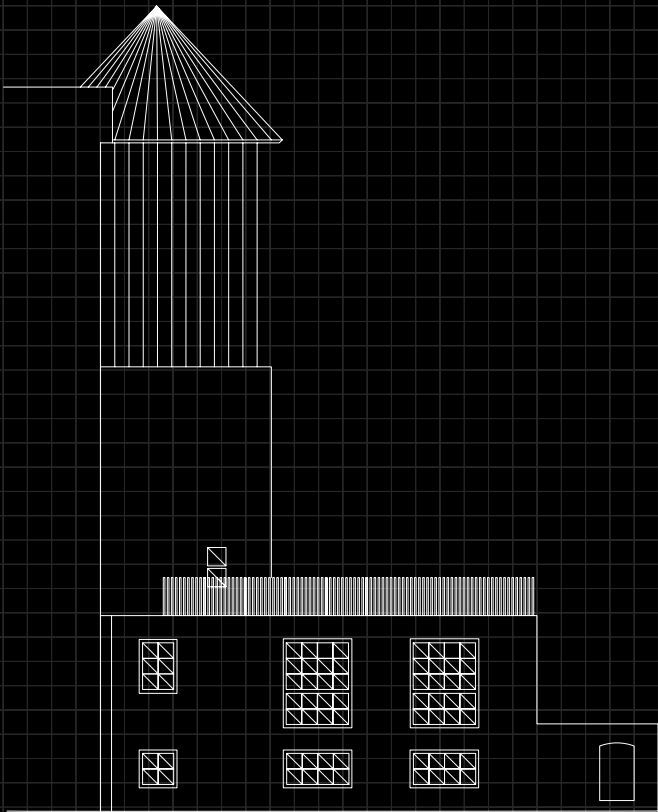
THOUGHT

OUT

THERE ARE NO RULES AT CLIVELAND ST.
STEP OUTSIDE WHERE A SWITCHED ON
HEALTHIER LIFESTYLE AWAITS OR RETREAT
INDOORS & WATCH THE WORLD FLOW BY.

CLIVELAND ST.
B19, GUNQUARTER,
1919, 2020.

SHOT TOWER



CANAL

ELEVATION

FIRST ERECTED IN THE 19TH CENTURY
THE NOTEWORTHY INDUSTRIAL
AESTHETICS ARE A
DEFINING FEATURE OF SHOT TOWER.



TURNING

POINT

WITH ITS DISTINCTIVE PROFILE
THE SHOT TOWER IS AN ICONIC
FOCAL POINT OF CLIVELAND ST.
MAKING THE MOST OF ITS ARCHITECTURAL
MERITS IT WILL HOUSE A PRIVATE
PENTHOUSE WITH AN EXCLUSIVE
DESIGN & EXCEPTIONAL SPECIFICATION.

CLIVELAND ST.

B19, CUNQUARTER.

1919, 2020.

MADE TO MEASURE



THE INNER WORKINGS AT
CLIVELAND ST. ARE PERFECTLY
JUDGED. EACH HOME HAS BEEN
DESIGNED WITH BESPOKE CARE
TO RESPOND TO ORIENTATION,
VIEWS & TO MAXIMISE THE
SENSE OF SPACE.

THE LIVING



THE LOUNGING



MADE THOUGHT

CAREFULLY CURATED LIVING SPACES
TRANSITION SEAMLESSLY & CONFIDENTLY
REFLECTING THE COMPOSURE OF THE BUILDINGS
ELEGANT FACADE. CLEAN LINES & CRAFTED
INTERIORS FUSE NATURAL MATERIALS WITH
CONTEMPORARY STYLING CREATING
THE FEELING THAT THIS HAS
BEEN TAILOR-MADE FOR YOU.

CLIVELAND ST.
B19. GUNQUARTER.
1919. 2020.

LOCKED & LOADED






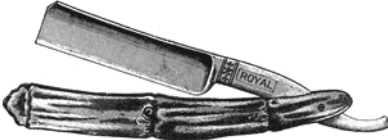
IF

NOT

NOW

THEN

WHEN?

BRUM  IS  HOME
TO THE UNDERGROUND
& THE URBANE, THE
MODEST  &  THE
MAGNIFICENT,
THE VISIONARY & THE
VIRTUOSO & IT'S READY
FOR  YOUR  STORY



BOSTIN & BRILLIANT

BRUM.

ITS BRAVE. ITS BOLD. ITS
UNAPOLOGETICALLY DIFFERENT &
ITS OUT TO PROVE YOU WRONG.

AS A PLACE TO LIVE IT MAKES
CONVINCINGLY GOOD SENSE.
ALONGSIDE ITS PICTURESQUE
CANALS, OUTSTANDING CULTURE
& THRIVING COMMERCIAL SECTOR,
IS AN EXPLOSION OF GASTRONOMIC
ESTABLISHMENTS, CRAFT BREWERIES,
MAKERS & INNOVATORS WHOSE
REPUTATIONS & INFLUENCE
REACH FAR & WIDE.

NEVER A CITY TO SHOW OFF,
BRUM & ITS PEOPLE ARE BUILDING
ON THIS RECOGNITION WITH
AN ATTITUDE & AUTHENTICITY
THAT IS MAKING OTHERS
STAND UP & TAKE NOTICE.

BIRMINGHAM

THIS IS NOT A REHEARSAL.



CLIVELAND ST.

B19, CUNQUARTER.

1919, 2020.

GRAND CENTRAL

TRUTH BE TOLD, YOU
EITHER STAND STILL IN LONDON
OR JOIN BRUM'S GENERATION
OF CAN DOERS FORGING A
NEW IDENTITY FOR THE CITY.

THE CITY'S UNIQUE INDUSTRIAL
HERITAGE IS NOW AN HAVEN FOR
CRAFT, CUISINE & CREATIVITY.



[1]

1. JQ HIGH
2. OTTO STREET
3. PIG PIZZA
4. ST PAUL'S & LASAN
5. TAIL SQUARE



[2]



[5]



[4]



[3]

HIGH

TOWN

BRUM'S INTIMATE - IT'S A SHARED
LIVING EXPERIENCE AND IT'S RIGHT
OUTSIDE YOUR DOOR AT CLIVELAND ST.

THE RESURGENT JEWELLERY QUARTER IS
THE PERFECT LOCATION
FROM WHICH TO EXPLORE
THE CITY'S URBAN REVIVAL.

RENOWNED FOR BEING HOME TO 1,000
TRADES IT'S A MELTING POT
OF RICH HISTORY FUSED
WITH A SUSSED, CONNECTED LIFESTYLE.



[1]



[2]

1. THE CUSTARD FACTORY
2. DIGBETH
3. CLINK CRAFT ALE BAR
4. KILDER & OPM



[3]



[2]



[4]

LOW

DOWN

DIGBETH, A CULTURAL HOTSPOT JUST SOUTH OF CLIVELAND ST. IS HOME TO BRUM'S INDEPENDENT STREET FOOD SCENE & IT'S SOMETHING LOCALS ARE FIERCELY PROUD OF. DEFIANTLY NOT SHOREDITCH LITE, BY DAY IT'S A HIVE OF URBAN CREATIVITY, BY NIGHT A BUSY, HEDONISTIC HAUNT SOUNDTRACKED BY LIVE BANDS & DJS.



CLIVELAND ST.
B19, GUNQUARTER,
1919, 2020.

THE
1. IVY
2. TATTU
3. CHURCH
4. CLEMENTS
GREAT WESTERN ARCADE

MAKE

HAPPEN

BRUM CAN BE RATHER PERSUASIVE. ECONOMICALLY IT'S CONSTANTLY EVOLVING & IT'S PERFECT FOR PROFESSIONALS & INDIVIDUALS WHO APPRECIATE EXCELLENCE. IT'S NOW HOME TO SOME OF THE UK'S BIGGEST NAMES IN BUSINESS, CULTURE & LEISURE.

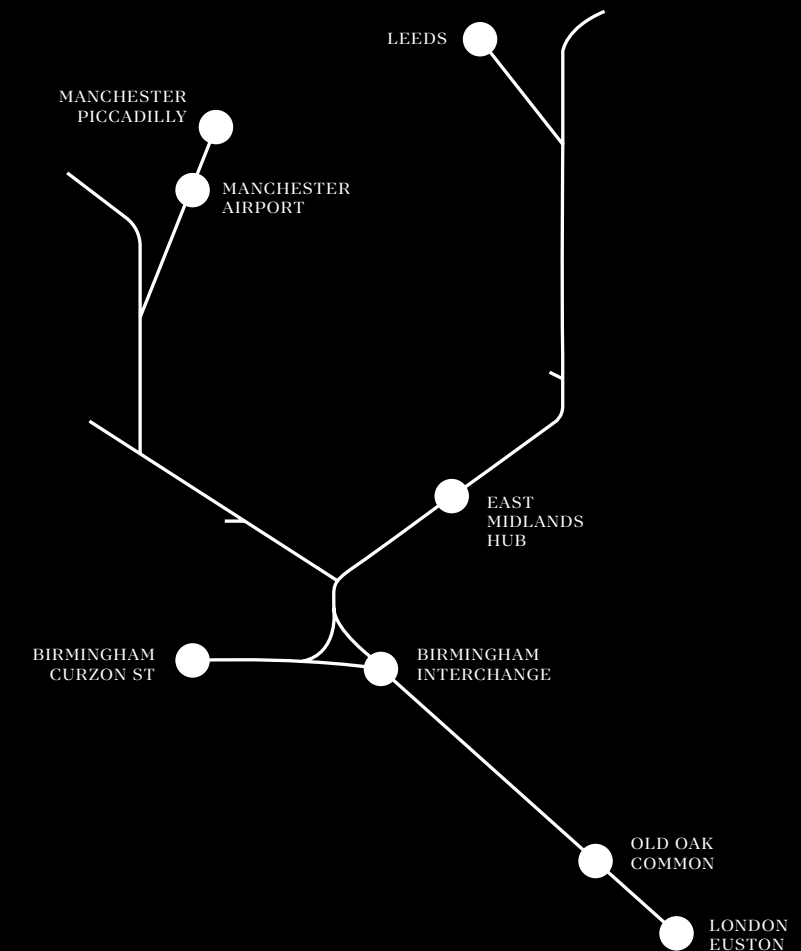
WITH THE LARGEST INVESTMENT IN INFRASTRUCTURE FOR A GENERATION MAKING IT A MORE CONNECTED CITY ITS REPUTATION AS A GLOBAL PLAYER IS NOW FIRMLY ESTABLISHED.



[4]



MAIN HS2 HUBS & LINES



LOCAL & INTERNATIONAL

MAKING CONNECTIONS MAKES
YOU GROW.

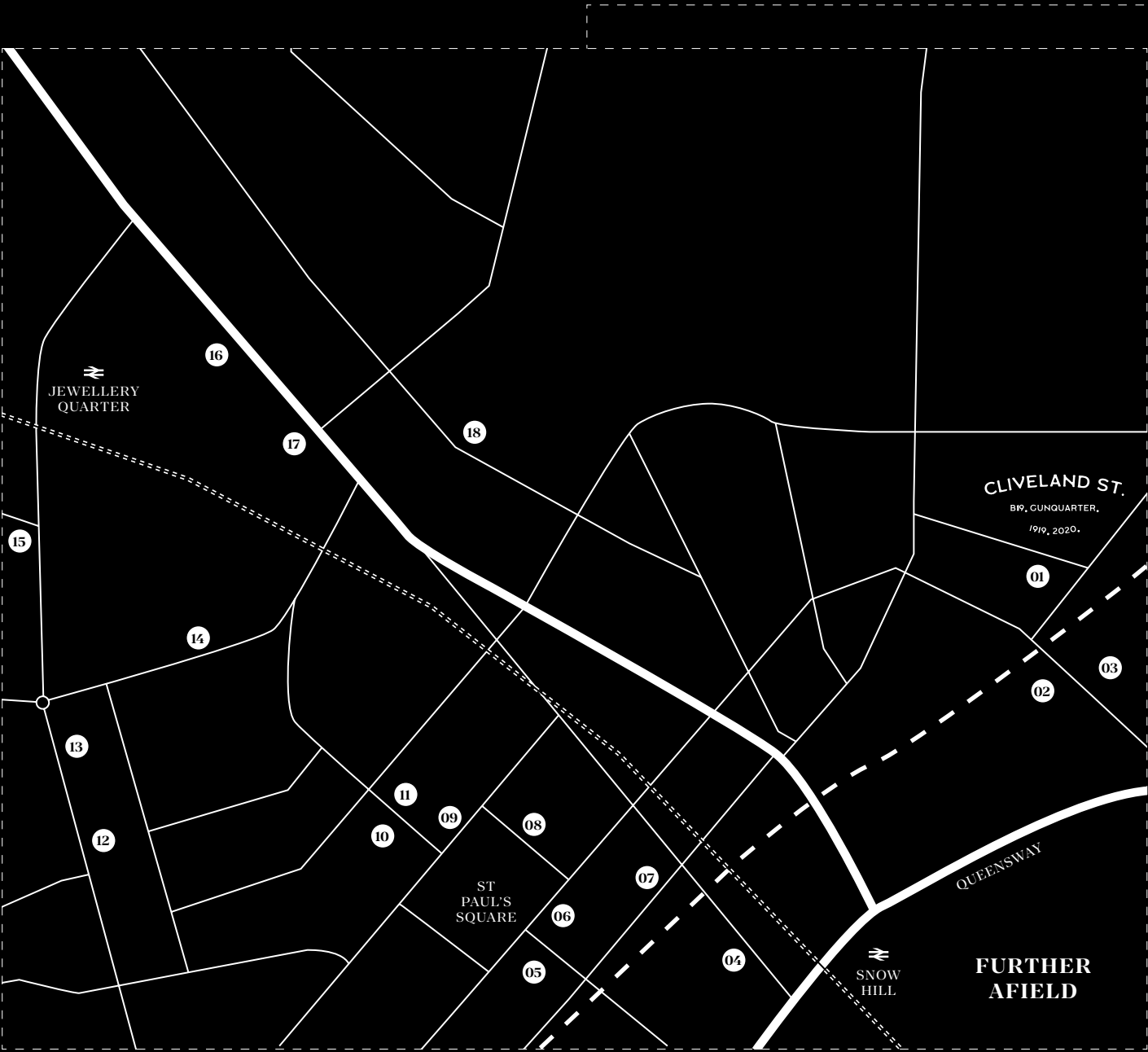
RUNNING FROM NORTH TO SOUTH,
THE NEW HS2 TRAIN LINE WILL
ENABLE FAST CONNECTIVITY
BETWEEN MAJOR UK CITIES
WITH 2 NEW STATIONS
PLANNED FOR BRUM.

WITH ITS CLOSE PROXIMITY TO
THE HEART OF THE OPERATION
CLIVELAND ST. IS A PLACE FROM
WHICH ANYTHING IS
NOW POSSIBLE.

CLIVELAND ST IS ALSO WITHIN WALKING
DISTANCE OF SNOW HILL, MOOR ST., NEW
ST. & JEWELLERY QUARTER STATIONS
ENSURING YOU'RE CONNECTED AT ALL TIMES.

| HS2 JOURNEY TIMES FROM BIRMINGHAM | |
|-----------------------------------|------------|
| LONDON | 49 MINUTES |
| MANCHESTER | 41 MINUTES |
| LEEDS | 57 MINUTES |

THE PROXIMITY



- | | | | | | |
|----|-----------|---------|-----|--------------|------------|
| 1. | ROBANNAS | STUDIOS | 10. | BLOC | HOTEL |
| 2. | GUNMAKERS | ARMS | 11. | OTTO | PIZZA |
| 3. | THE | BULL | 12. | 1000 | TRADES |
| 4. | INDIAN | BREWERY | 13. | BUTTON | FACTORY |
| 5. | ACTRESS & | BISHOP | 14. | THE | WILDERNESS |
| 6. | THE JAM | HOUSE | 15. | THE REBEL | CHICKEN |
| 7. | SARTO | HAIR | 16. | THE LORD | CLIFDEN |
| 8. | ST PAUL'S | HOUSE | 17. | THE | CHURCH |
| 9. | 40 ST | PAUL'S | 18. | BURNING SOUL | BREWERY |

FURTHER AFIELD



- | | | | | | |
|----|-----------------|------------|-----|------------|------------|
| 1. | ASTON | UNIVERSITY | 10. | CUSTARD | SELFRIDGES |
| 2. | EASTSIDE | PARK | 11. | ST PAUL'S | FACTORY |
| 3. | BIRMINGHAM CITY | UNIVERSITY | 12. | SQUARE | SQUARE |
| 4. | CHILDREN'S | HOSPITAL | 13. | BIRMINGHAM | MUSEUM |
| 5. | PIGEON | PARK | 14. | TOWN | HALL |
| 6. | COLMORE | ROW | 15. | THE | MAILBOX |
| 7. | THE | IVY | 16. | THE | REP |
| 8. | GRAND | CENTRAL | 17. | SYMPHONY | HALL |
| 9. | | BULLRING | 18. | ARENA | BIRMINGHAM |

CLIVELAND ST.

B19, GUNQUARTER.

1919, 2020.

GUN TO JEWELLERY

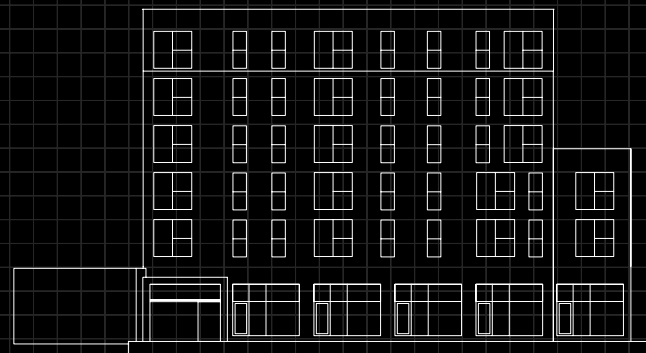


CLIVELAND ST.
B19. CUNQUARTER.
1919. 2020.

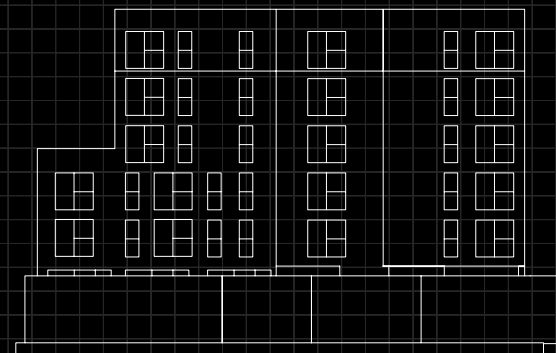
FORTUNE FAVOURS THE BRAVE

MAIN BUILDING

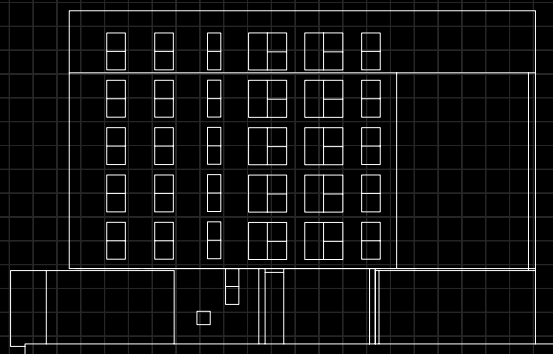
FRONT
CLIVELAND
ELEVATION
ST



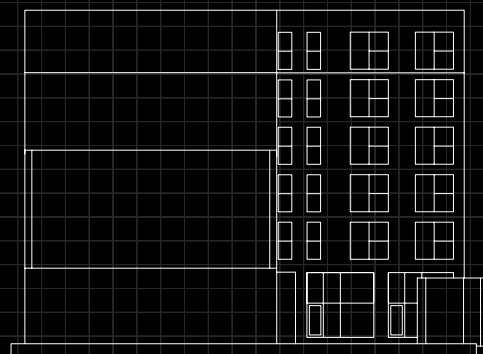
REAR
BIRMINGHAM
ELEVATION
CANAL



SIDE
NORTH
ELEVATION
EAST

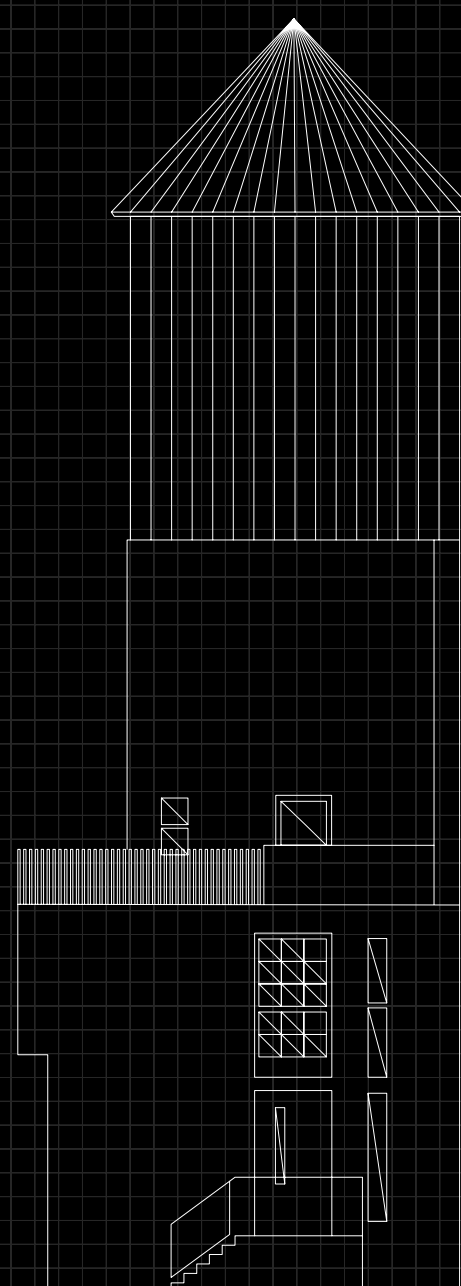


SIDE
SOUTH
ELEVATION
WEST

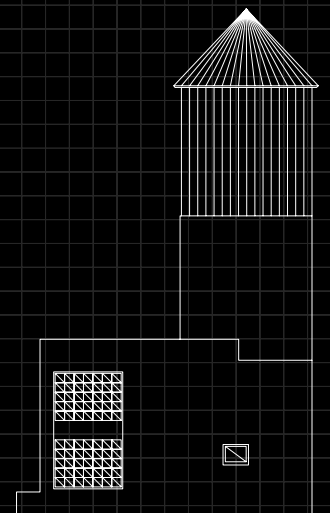


THE SHOT TOWER

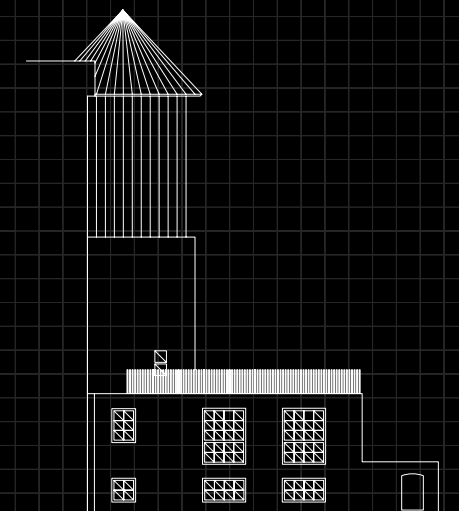
THE
FRONT
SHOT
TOWER
ELEVATION



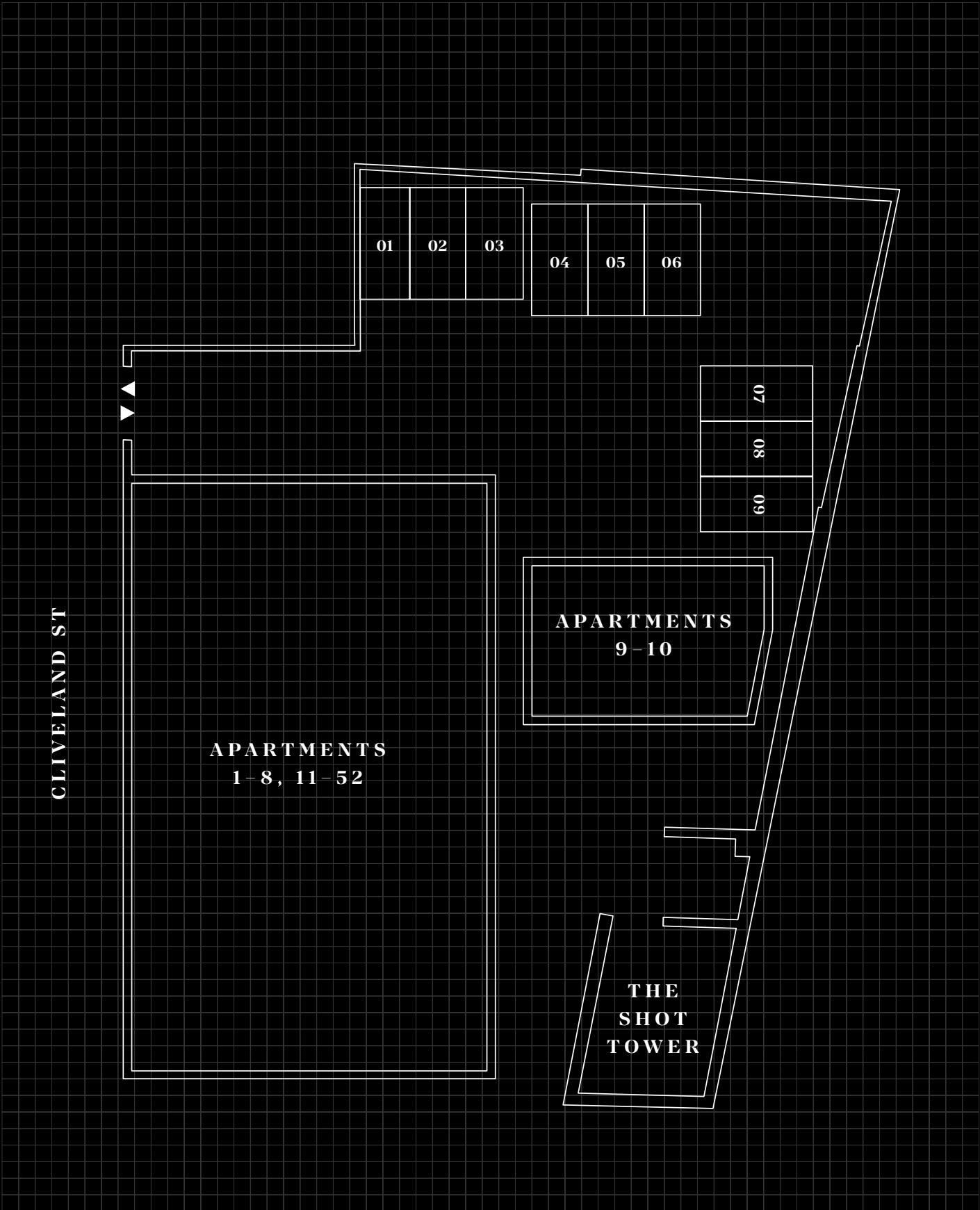
THE
SIDE
SHOT
TOWER
ELEVATION



THE
CANAL
SHOT
TOWER
ELEVATION



THE SITE PLAN



THE SPECIFICATION

| | |
|-------------------------|--|
| Services | All mains services connected. |
| Heating and hot water | Vaillant gas fired combination central heating boiler to each property. |
| Electrical | Brushed stainless steel effect sockets and switches throughout apartments, details on exact layout are available on request. |
| Kitchen | Contemporary kitchens with a range of fitted floor and wall units complete with modern square edge laminate work tops. Includes electric cooker hob and extractor, built in fridge/freezer, integrated dishwasher and integrated washer/dryer in all apartments. |
| Sanitaryware | Duravit sanitaryware and Hansgrohe brassware, mains pressure hot water, shower tray and screen in 1 beds, addition of a bath in 2 beds. |
| Doors | Contemporary doors throughout including brushed stainless steel ironmongery, fire rated doors where applicable. |
| Skirting and architrave | Pencil round skirting and architrave finished in white egg shell paint. |
| Decoration | White emulsion paint to all plastered walls and ceilings. |
| Ceramic tiling | Porcelanosa tiles to bathroom floors and part tiled walls in wet areas. |
| Flooring | Carpets in bedrooms and laminate throughout other than in wet areas. |
| Door entry | Keypad entry with intercom access from apartments. |
| TV distribution | Digital aerial and signal distribution to TV point in each apartment. |
| Telephone and data | Telephone/data cable to a single outlet in each apartment. |

Disclaimer: Elevate Property Group and any joint agents give notice that:

1. They are not authorised to make or give any representations or warranties in relation to the property either here or elsewhere, either on their own behalf or on behalf of their client or otherwise. They assume no responsibility for any statement that may be made in these particulars. These particulars do not form part of any offer or contract and must not be relied upon as statements or representations of fact.

2. Any areas, measurements or distances are approximate. The text, images and plans are for guidance only and are not necessarily comprehensive. It should not be assumed that the property has all necessary planning, building regulation or other consents and Elevate Property Group have not tested any services, equipment or facilities. Purchasers must satisfy themselves by inspection or otherwise.

3. These particulars were prepared from preliminary plans and specifications before the completion of the properties. These particulars, together with any images that they contain, are intended only as a guide. They may have been changed during construction and final finishes could vary. Prospective purchasers should not rely on this information but must get their solicitor to check the plans and specification attached to their contract.

CLIVELAND ST.

B19, GUNQUARTER,

1919, 2020.



RECLAIM BRUM

SALES@ELEVATEPROPERTYGROUP.CO.UK



