

Elevate Property Group



Welcome.



Here to stay.

At Elevate, we don't like to go with the flow. We like to challenge the norm and deliver the unexpected. We go where our instincts take us. To places where we can bring new meaning to historical icons or create new landmarks that revitalise our region's communities.

We focus on keeping the best of what's good and then we make it better.



THE CHASE

2015

Early works.





GRAND VIEW
ASTWOOD BANK

2014






HOLYWELL CHAPEL
—
MALVERN

2014





ST PAULS HOUSE

ST. PAULS HOUSE

2017

Transform.

Commercially Savvy.

Quality of design and quality of build are equal partners in our process. We use time honoured building practices to support ground breaking design. The results are evident in our track record of delivering strong returns from bespoke developments that capitalise on location and redefine local heritage.



CONCORD

ESTD. 1936
BIRMINGHAM - ENGLAND

2015

The penthouse at Concord House in Holloway Head, Birmingham, sold fully furnished for £1.8 million. The most expensive city centre apartment that has ever been sold in Birmingham.





CONCORD

ESTD. 1936
BIRMINGHAM - ENGLAND

QUEENSWAY HOUSE

2017

Home to 6 stunning loft style apartments, Queensway House is a majestic blend of cosseted luxury and urban energy.





QUEENS HOUSE

2017

A modern collection of 62
apartments centrally located in
the heart of Coventry.





TT
TT

TENNANT ST. LOFTS

2018

40 stylish apartments perfectly positioned. Consummate design with enviable specifications.



PRINCES GATE

2019

A residential development of 100 luxury studio, one and two bedrooomed apartments positioned in the heart of Solihull, one of the most coveted areas in the UK.



Redefine.

Sustainable legacies.

We're in the business of regeneration, so for us change is opportunity. We take structures and environments that have outlived their original purpose and through intelligent, sustainable design we give them a new lease of life. And in doing so we transform the personality of a place and build character within a community.



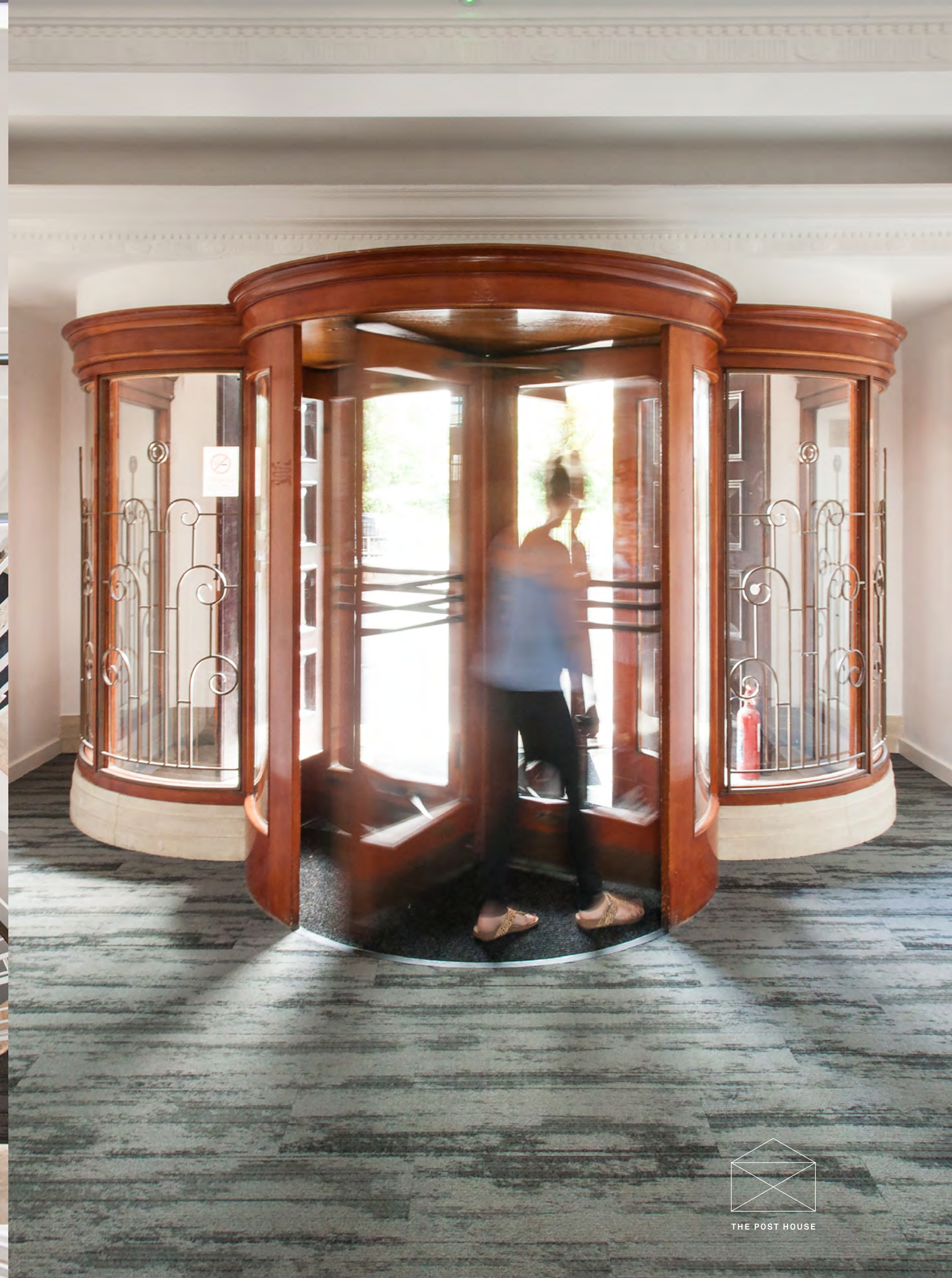


THE POST HOUSE

2019

A landmark development of 48 apartments combining Art Deco architecture and modern interiors in thriving Gloucester.







ASSAY LOFTS

2019

Born out of history, Assay Lofts is a development of 32 impeccably composed living spaces in the heart of Birmingham's resurgent Jewellery Quarter.

COMPARED
TO WHAT...



ASSAY LOFTS

ALBAN

HOUSE

2020

A unique High Street development of luxury apartments, penthouses all enjoying convenient city centre living in the heart of Hereford.







VICTORIA POINT

2020

An exemplary scheme of 216 residences,
meticulously designed and luxuriously
appointed, within close proximity to
Ashford International train station.





IT IS
WHAT
IT IS

N°25
CLIVELAND
STREET

2021

Cliveland St. is home to 52 crafted living quarters each echoing the distinctive character of their unique location.



in t
anc
in
Bei
in t
anc
Th
be



N°25
CLIVELAND
STREET

SHELDON COURT B26

2021

Sheldon Court is a new development of 64 affordable 1 and 2 bedroom apartments surrounded by leafy landscapes in Sheldon, one of East Birmingham's most thriving areas.







TRENT BRIDGE QUAYS

2021

Built on the banks of the River Trent, Trent Bridge Quays is a contemporary development of 95 riverside townhouses, apartments and penthouses in Nottingham, NG2.



TRENT BRIDGE
QUAYS




TRENT BRIDGE
QUAYS

Reconnect.

Experience is everything.

Elevate exists to strengthen the connections between people and places. It's not just another property to us, it's a way to live. Through progressive partnering we create places that enhance the local landscape and celebrate the diversity of the local community. New relationships built around experience.



PRIORY HOUSE

Circa  1950

2022

The regeneration of this iconic landmark building will create 79 unique apartments, many with city skyline views in Southside, Birmingham B5.



PRIORY
HOUSE
LOFTS
79 stylish apartments
ELEVATE Help to Buy savills
Savills: 0121 200 4567
www.savills.co.uk/property/priory-house

PRIORY HOUSE

SOUTHALL BROS & BARCLAY LTD.

HOUSE

PRIORY HOUSE







CAMDEN ST.	B1	HEATON HOUSE
	BHX	

2022

Restoration of a historic 19th century Georgian villa 'Heaton House'. The scheme consists of 14 townhouses having terraced gardens, on-site gated car parking and 42 apartments including 6 Lofts.



2022

The regeneration of a historic double fronted five bedroomed Gentlemen's residence in Birmingham's Jewellery Quarter with some 3,455 sq.ft (321 sq.m), lovingly and sympathetically restored and interior designed throughout.



Winner
Best Restoration
Project 2023
(Vantage & Co.)



Winner
Best Bathroom
Project 2023
(Vantage & Co.)

CAMDEN ST. YARD + BARN S

2023

A mixed use development comprising
of townhouses & commercial space
fronting Camden St, Birmingham, B1.





CAMDEN VILLAGE

CAMDEN
ST. YARD
+ BARN

A photograph of a modern, multi-story brick building with large windows, illuminated from within, set against a dramatic, cloudy sky at dusk. The building is the central focus, with a street in the foreground and other buildings visible in the background.

TRENT BRIDGE
QUAYS

PHASE II

2023

Muller Yard (Trent Bridge Quays Phase II), is a new development on the banks of the River Trent consisting of 44 apartments, 14 townhouses and 5,177sqft of retail/commercial space fronting Meadow Lane.



EDITH WALK SHOP

EDITH WALK SHOP

EDITH WALK

2023

A new development of 11 houses, 6 apartments and 3 Retail/Commercial units located in the centre of Great Malvern, a picturesque spa town.





GUNSMITH HOUSE
EST 1901

Price Street

2023

Situated In the Gun Quarter, the Price Street regeneration scheme will create 84 new residential apartments, many having their own balconies and roof terraces.



GUNSMITH HOUSE
EST. 1901
Pine Street



IMPERIAL HOUSE

PRINCES GATE PHASE II

2023

Phase II of a residential development incorporating 60 brand new luxury apartments positioned in the heart of Solihull.





IMPERIAL HOUSE

PRINCES GATE PHASE II



IMPERIAL HOUSE

PRINCES GATE PHASE II



SILK YARD

APARTMENTS

2024

A scheme to build 258 apartments. Planning permission for both Phases 1 and 2 has now been granted. The first phase of the scheme will provide 94 apartments on the corner of John Street and Castleward Boulevard.





CHAPMANS YARD

UPPER GOUGH STREET

EST. 2024

2025

Located close to Birmingham's Mailbox, Grand Central station and the City centre is Chapmans Yard. A new regeneration scheme will create 111 residential apartments coming 2025.



ARIEL HOUSE

2025

57 stylish one and two bed apartments,
with parking, located on the Coventry
Road to the east of Birmingham just 3
miles from Solihull town centre.
Coming to the UK 2025.



Restore.

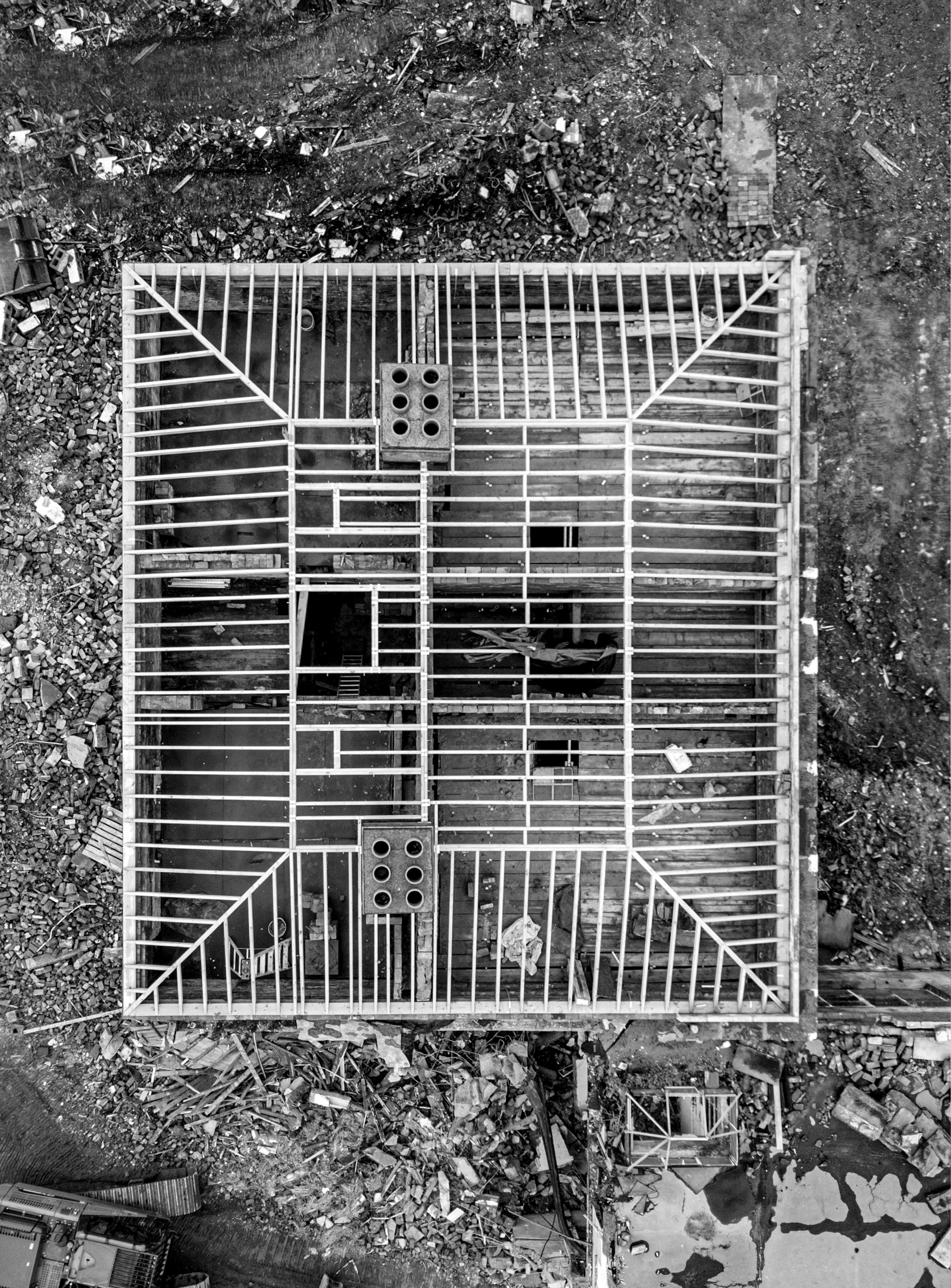
Stand our ground.





CAMDEN ST.
BHX B1
HEATON
HOUSE

A work in progress.
Restoration of a historic 19th century
Georgian villa 'Heaton House'.





Art + Graft.



Urban Myths.

For us, bricks and mortar is never enough. We go beyond the ordinary by commissioning local artists to create unique art pieces that work in harmony with our sites and give our buildings their stand out identity. These artworks are taking on a life of their own and becoming modern day urban myths.



DON'T
ASK ME
WHAT I
THINK
OF YOU



CCMPARED
TC WHAT...

mfg
0121 2367388
mfgpolice.com

ST PAUL'S SQUARE

CHARLOTT ST

Pay at
machines
→
Capacity 800

P
→
Disney Street







Aftercare.

Customer service for
all our home owners.



Commitment.

Elevate Property Group are committed to providing the highest level of after care service to our home owners so they have everything they need to get settled into their new homes as quickly as possible.

We use an independent after care specialist who is on hand to guide new owners through the handover process including the 'home owners checklist' and property induction.

They can also provide useful information around warranty terms and will be the single point of contact for any post completion issues.

Meet the team



Steve Dodd



Mike Diskin
CFO



James Costello
Managing
Director



Sam Meeten
Land
Director



Matt Pugh
Construction
Director



David Hofton
Sales
Director



Oli Diskin
Financial
Controller



Sue Crawford
Office
Manager



Stella Xydias
Sales
Manager

People.

Meet the Team



CONCORD

ESTD. 1936
BIRMINGHAM - ENGLAND





elevatepropertygroup.co.uk

St Paul's House, 23 St Paul's Square
Birmingham B3 1RB
T +44 (0)121 272 5729
E info@elevatepropertygroup.co.uk