



CHAPMANS YARD

UPPER GOUGH STREET

EST. 2024

FLOORPLANS / INVENTORY

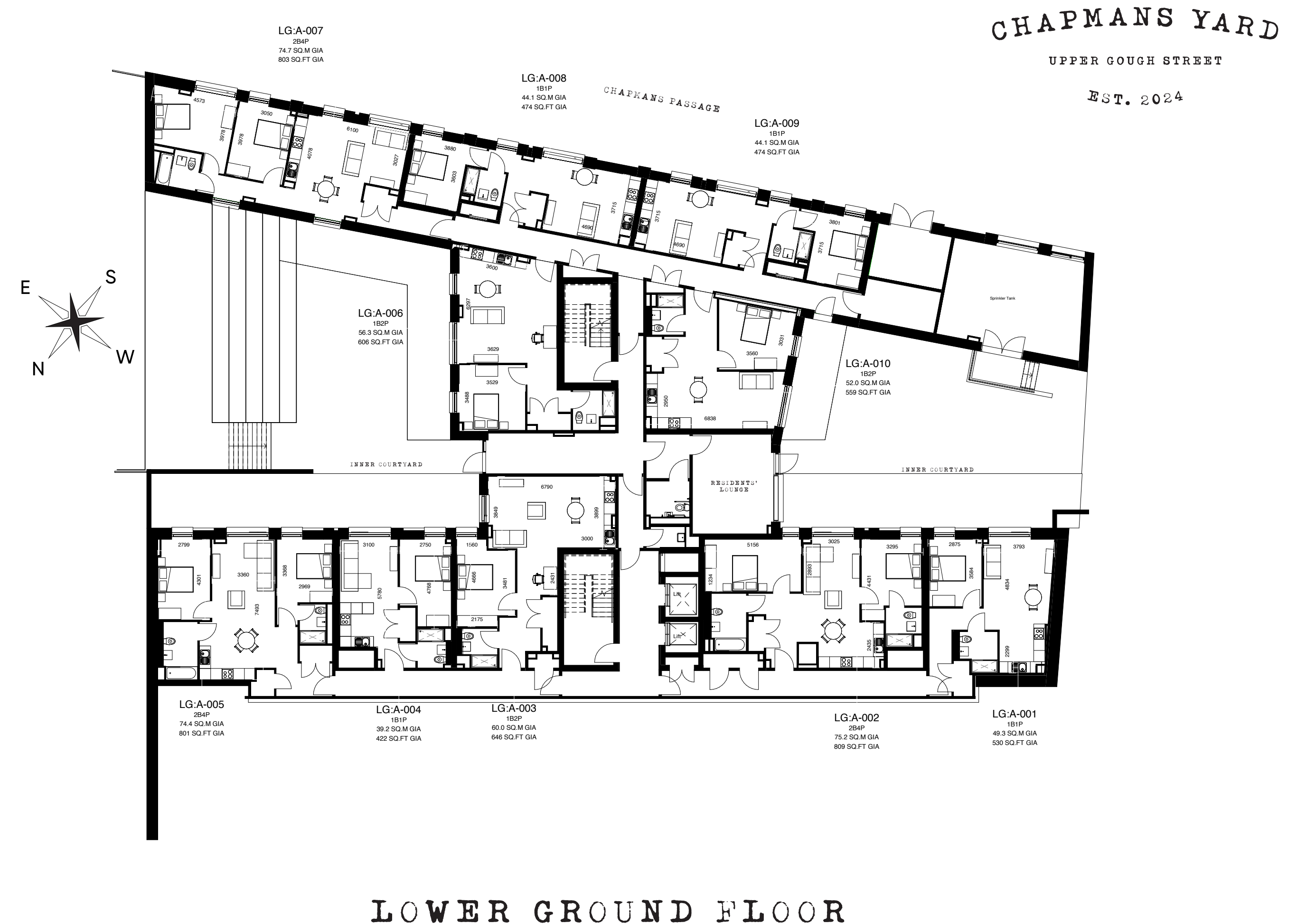
CHAPMANS YARD

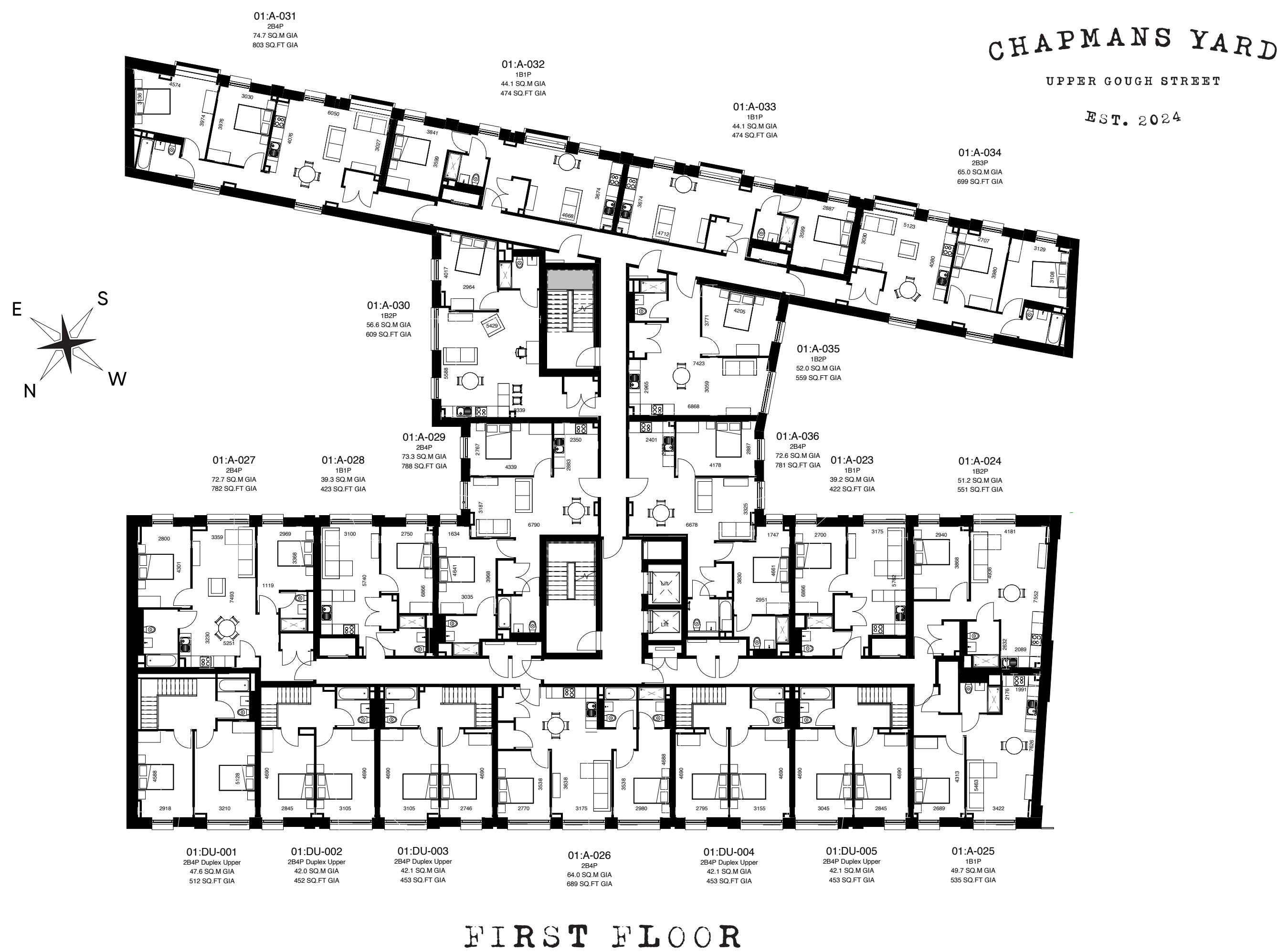
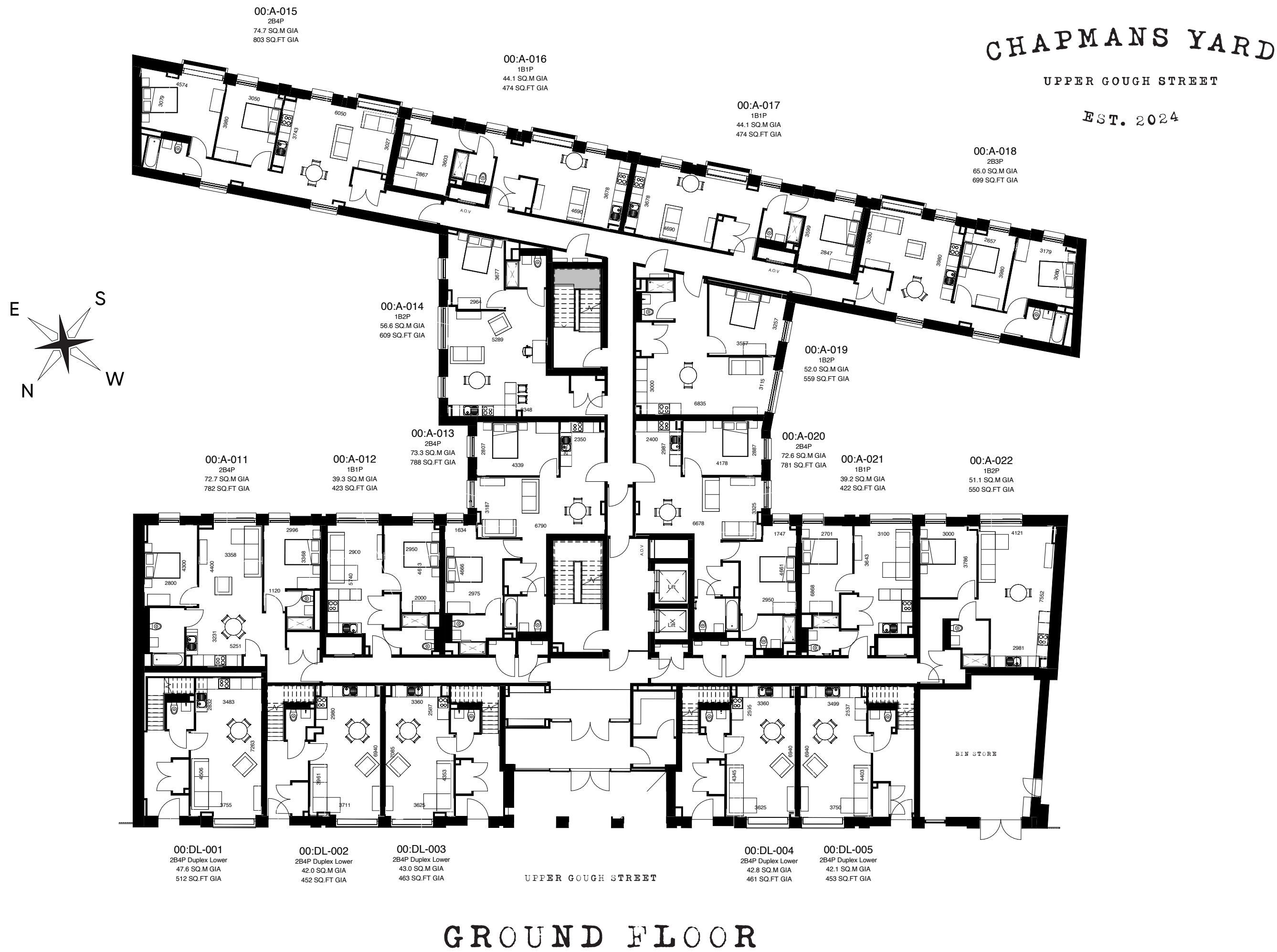
50 - 61
UPPER
GOUGH
STREET

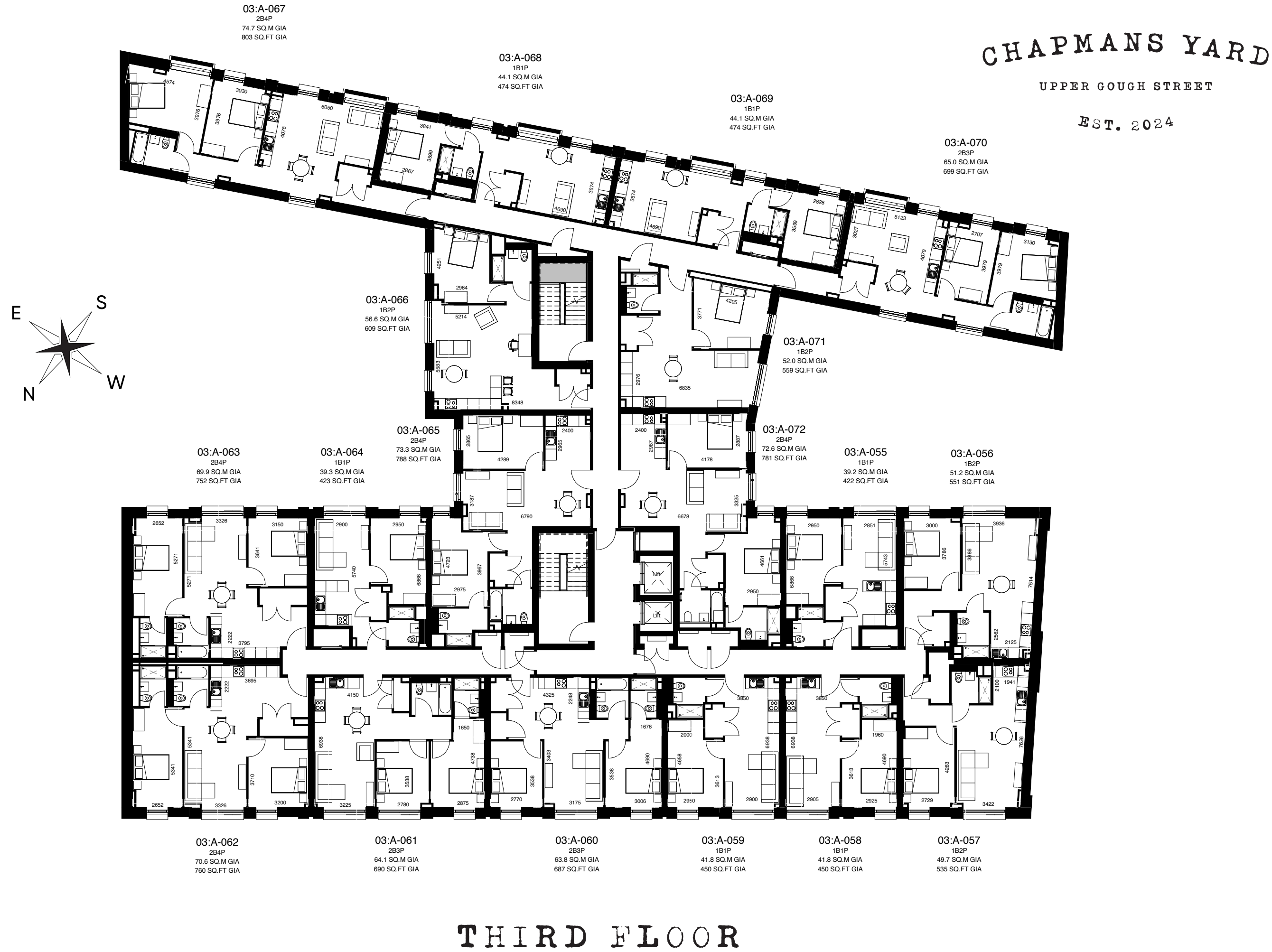
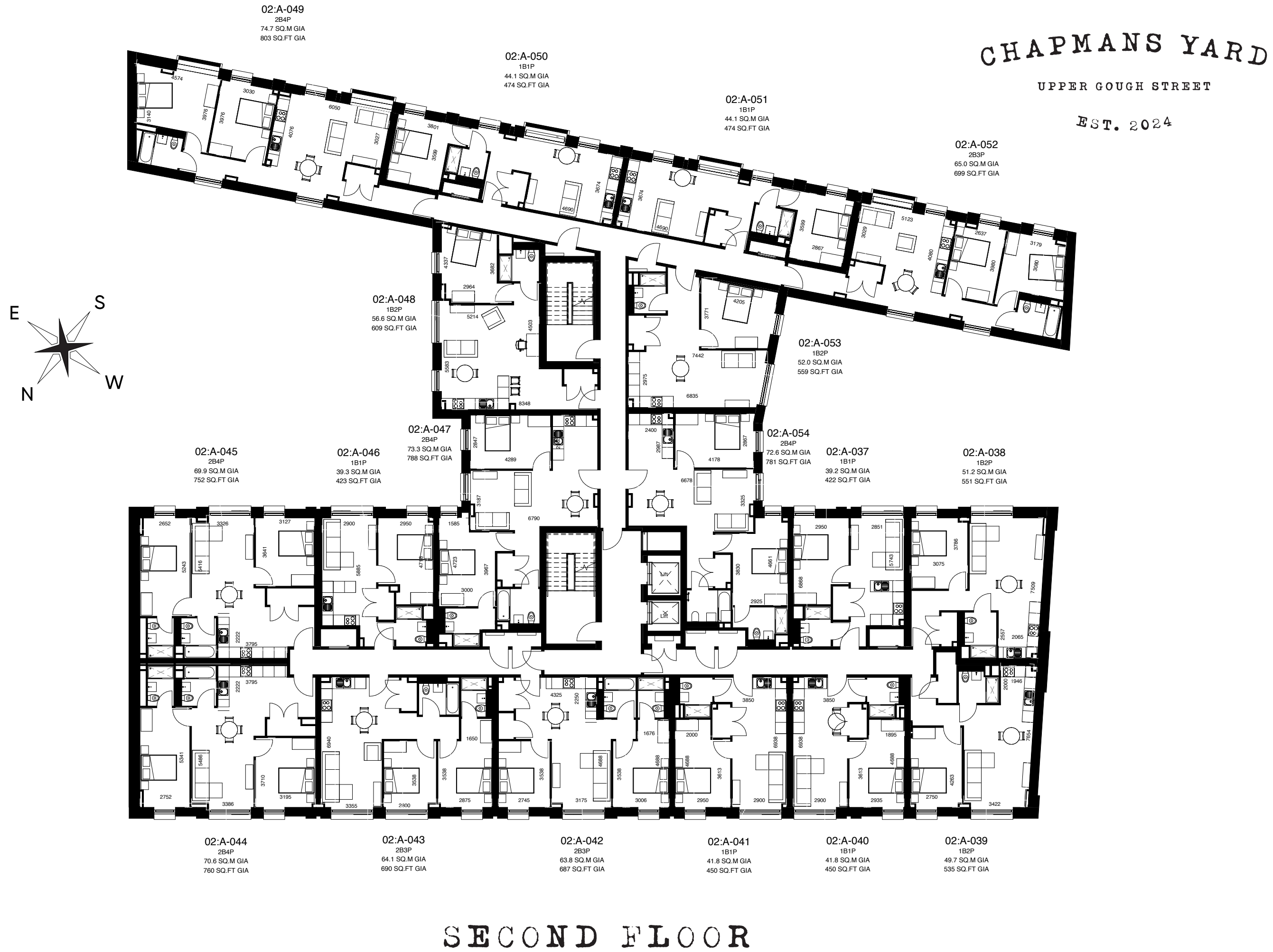
(PS. next to The Mailbox)

CENTRAL BIRMINGHAM B1

59 x one bed apartments, 47 x two bed apartments, 5 x duplexes



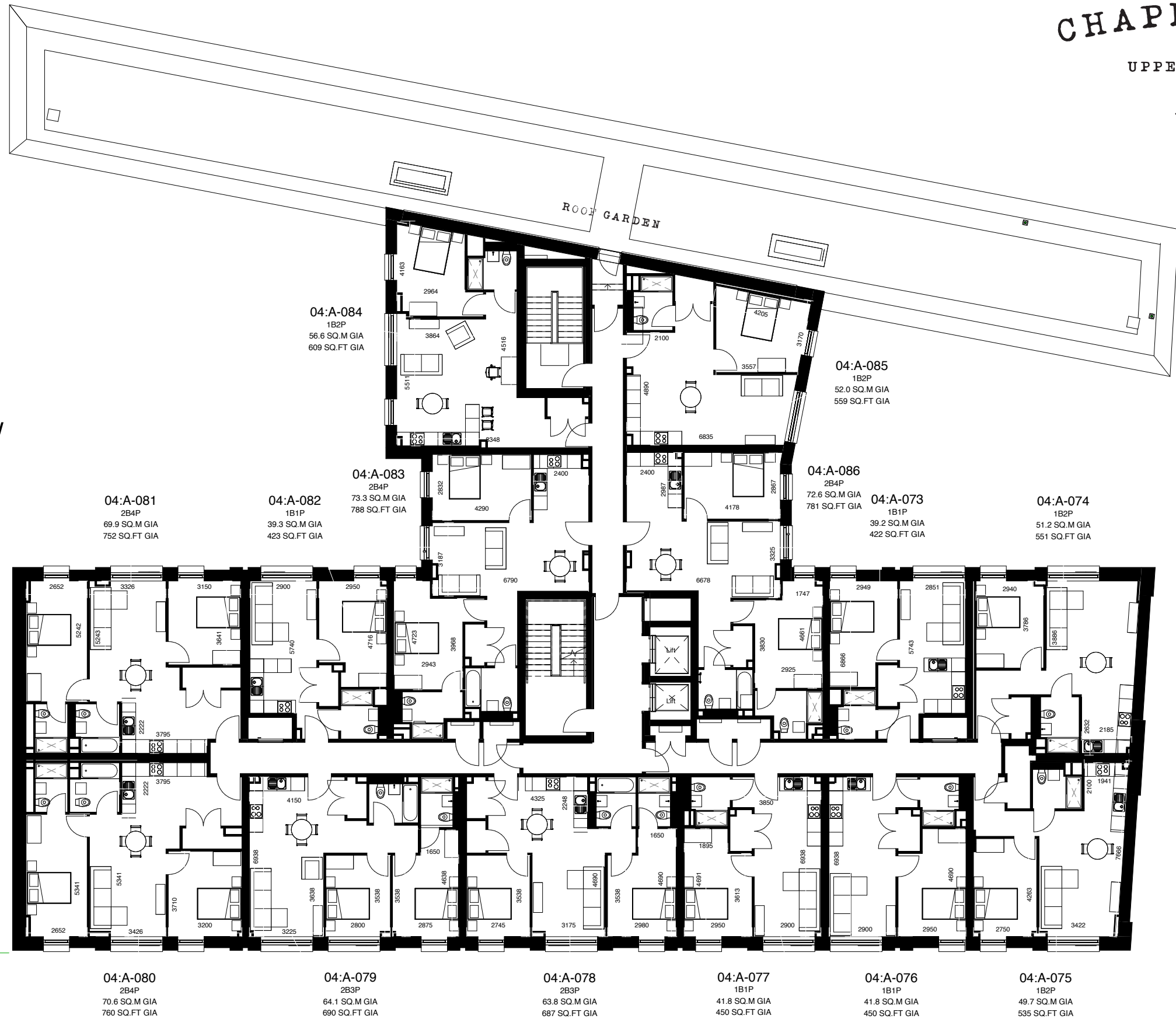
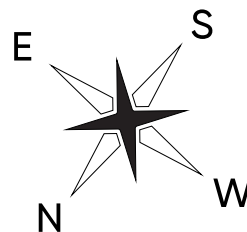




CHAPMANS YARD

UPPER GOUGH STREET

EST. 2024

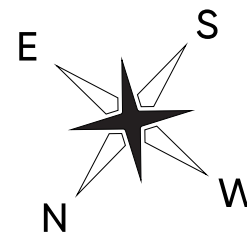


FOURTH FLOOR

CHAPMANS YARD

UPPER GOUGH STREET

EST. 2024

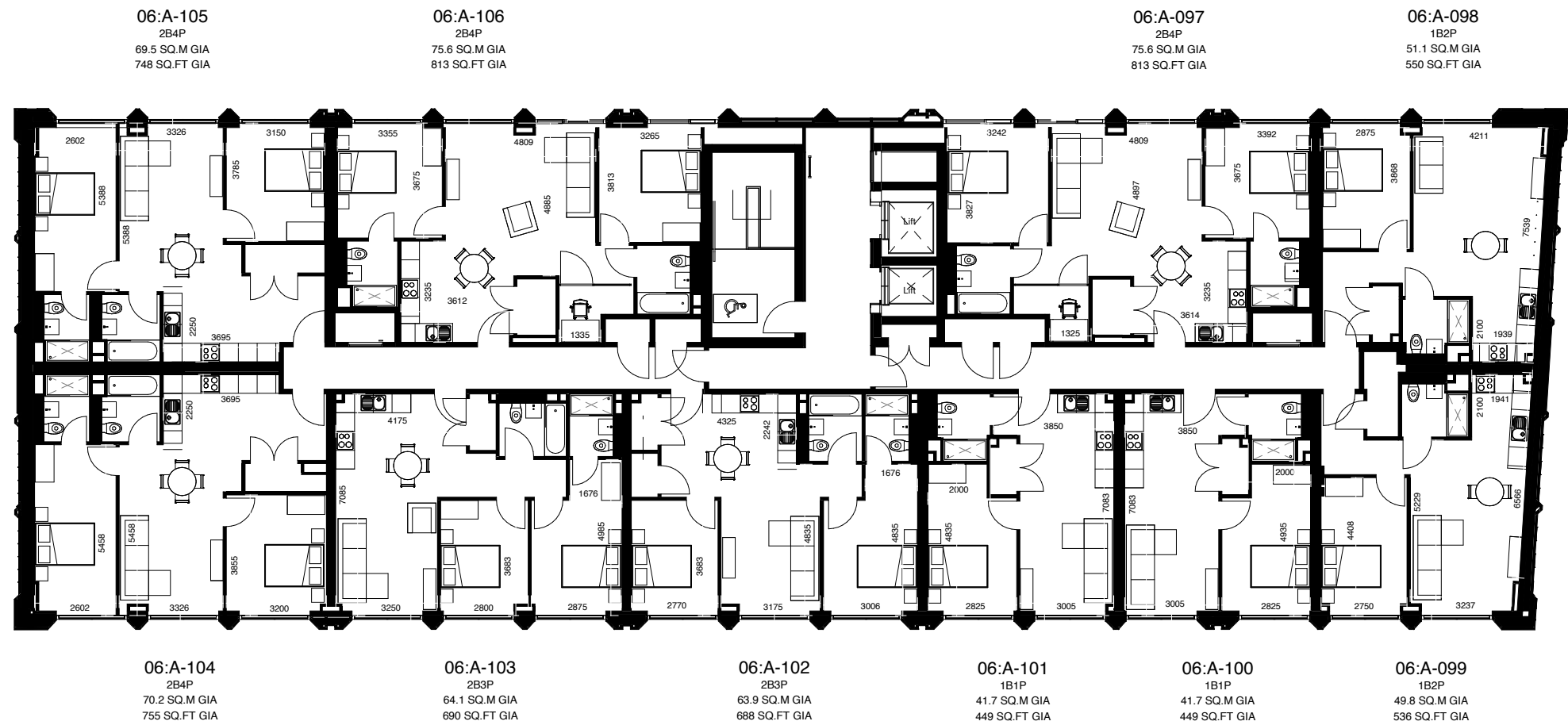
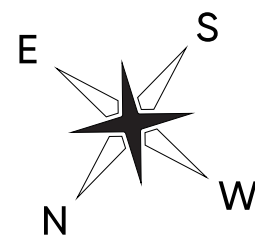


FIFTH FLOOR

CHAPMANS YARD

UPPER GOUGH STREET

EST. 2024



SIXTH FLOOR

APARTMENT INVENTORY



FIND
OUT
MORE...

SERVICES	Electric and water to each apartment with drainage connected to mains.
HEATING AND HOT WATER	Electric heating throughout with stylish WiFi controlled panel heaters, hot water cylinder with electric immersion provided by air source heat pump with heat exchanger. MVHR ventilation system per unit.
ELECTRICAL	Brushed stainless steel light switches and sockets incorporating USB points in kitchen and bedrooms for convenient device charging.
KITCHEN	Contemporary kitchens with a range of fitted floor and wall units complete with modern square edge laminate work tops. High-quality appliances including electric cooker, hob and extractor, built in fridge/freezer, integrated dishwasher and integrated washer/dryer in all apartments.
SANITARY WARE	Duravit sanitaryware and Hansgrohe brassware, mains pressure hot water, shower tray and screen in 1 beds, addition of a bath in 2 beds.
DOORS	Contemporary doors throughout including brushed stainless steel ironmongery, fire rated doors where applicable.
LIGHTING	Low energy recessed LED spots to kitchen and bathrooms, under cupboard LED to kitchen, pendants to living room and hall.
FIRE PROTECTION	Fire protection sprinklers throughout including stand-alone smoke/heat detectors.
SKIRTING AND ARCHITRAVE	Pencil round skirting and architrave finished in white egg shell paint.
CERAMIC TILING	High quality ceramic Porcelanosa tiles to bathrooms and part tiled walls in wet areas.
FLOORING	Carpets in bedrooms and LVT throughout other than in wet areas.
ACOUSTICS	Noise reduction measures including acoustic treatment to floors and internal walls and enhanced acoustic ratings to external windows.
DOOR ENTRY	Keypad entry to communal entrance with video intercom access from apartments, with CCTV monitoring of entrances.
TV DISTRIBUTION	Digital aerial and Freeview signal distribution to TV point in living room and bedroom.
TELEPHONE AND DATA	Virgin/BT incoming high speed cable to each individual apartment.

CHAPMANS YARD

UPPER GOUGH STREET

EST. 2024



ELEVATE

DISCLAIMER

These floor plans are for guidance purposes only and were prepared from preliminary plans and indicative layouts before the completion of the properties. Wardrobes and furniture as shown are not included but are merely a guide and an indication of suggested layout. Please note kitchen and bathroom layouts are also an indicative layout. Please ask for more detailed drawings when available. Prospective purchasers should not rely on this information and must ensure their solicitor checks the plans and specification attached to their contract.

Apartment plans are deemed to be correct but precise details may vary. Internal area is accurate to within 5%

FIND OUT MORE



WWW.ELEVATEPROPERTYGROUP.CO.UK